

1 2 3 4 5 6 7 8

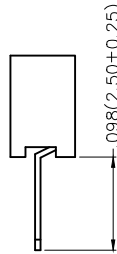
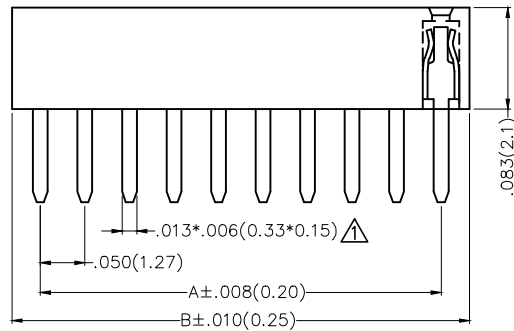
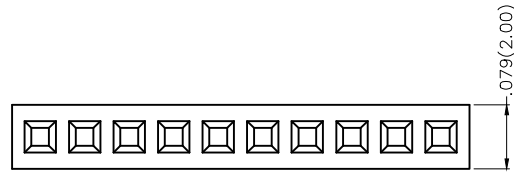
REV	LOCATIONS	DESCRIPTION	DATE	REVISER	APPD
1	△	Size changes	11/APR/23	MATT	KATE

Electrical

Current Rating: 1A AC(rms)/DC
 Voltage Rating: 250V AC(rms)/DC
 Contact Resistance: 20 mΩ Max
 Insulation Resistance: 1000 MΩ MIN
 Withstanding Voltage: 500V AC r.m.s
 Temperature Range—Operating: -40°C~+85°C

Material and Plating

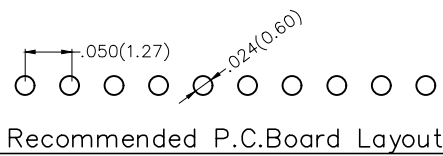
Housing: PA6T(UL 94V-0)
 Contact Pin: Phosphor Bronze
 Plating: Gold Plated/Selective gold on contact area, tin on tail




Ordering Information

FFH 127 26 — S XX S 1 XX 4 K6 K
 1 2 3 4 5 6 7 8 9 10 11

1	Category FFH—Female Header	2	Series Number 127—Pitch1.27mm	3	Distinction No. 26	4	Row Option S—Single row	5	Circuits XX	6	Entry Angle S—180° Vertical
7	Plating 1—Gold Plated 3—Selective gold on contact area, tin on tail	8	Thickness of Plating 00—Gold Flash 05—5μ" Custom plate available	9	Material—Resin 4—PA6T	10	Color—Resin K6—Black	11	Packaging K—Tray		





THIRD ANGLE PROJECTION	GENERAL TOLERANCES (UNLESS SPECIFIED)		APPROVE BY FRANK	DATE 20/SEP/16	PART NO. FFH12726-SXXS1XX4K6K	ITEM NO. FFH12726	 Building Technology Cornerstone	
	DESIGN UNITS Inch (metric)	X.±.012(0.30) X.X±.008(0.20) X.XX±.006(0.15) X.XXX±.004(0.10)	X.±5° .X'±2' .XX'±1° .XXX'±0.5'	CHECKED BY CHERRY	DATE 20/SEP/16	TITLE Board to Board (Female Header) Pitch 1.27mm 180° Vertical (DIP)		REV 1
SCALE 5:1	SIZE A4	DRAWN BY KATE		DATE 20/SEP/16	THIS DRAWING CONTAINS INFORMATION THAT IS PROPRIETARY TO TXGA INDUSTRIAL ELECTRONICS(S.Z)CO.,LTD AND SHOULD NOT BE USED WITHOUT WRITTEN PERMISSION			

1 2 3 4 5 6 7 8

REV	LOCATIONS	DESCRIPTION	DATE	REVISER	APPD

Circuits (n)	Part No.	Dimensions(in/mm)		Circuits (n)	Part No.	Dimensions(in/mm)	
		A	B			A	B
2	FFH12726-S02S1XX4K6K	.050(1.27)	.114(2.89)	27	FFH12726-S27S1XX4K6K	1.300(33.02)	1.364(34.64)
3	FFH12726-S03S1XX4K6K	.100(2.54)	.164(4.16)	28	FFH12726-S28S1XX4K6K	1.350(34.29)	1.414(35.91)
4	FFH12726-S04S1XX4K6K	.150(3.81)	.214(5.43)	29	FFH12726-S29S1XX4K6K	1.400(35.56)	1.464(37.18)
5	FFH12726-S05S1XX4K6K	.200(5.08)	.264(6.70)	30	FFH12726-S30S1XX4K6K	1.450(36.83)	1.514(38.45)
6	FFH12726-S06S1XX4K6K	.250(6.35)	.314(7.97)	31	FFH12726-S31S1XX4K6K	1.500(38.10)	1.564(39.72)
7	FFH12726-S07S1XX4K6K	.300(7.62)	.364(9.24)	32	FFH12726-S32S1XX4K6K	1.550(39.37)	1.614(40.99)
8	FFH12726-S08S1XX4K6K	.350(8.89)	.414(10.51)	33	FFH12726-S33S1XX4K6K	1.600(40.64)	1.664(42.26)
9	FFH12726-S09S1XX4K6K	.400(10.16)	.464(11.78)	34	FFH12726-S34S1XX4K6K	1.650(41.91)	1.714(43.53)
10	FFH12726-S10S1XX4K6K	.450(11.43)	.514(13.05)	35	FFH12726-S35S1XX4K6K	1.700(43.18)	1.764(44.80)
11	FFH12726-S11S1XX4K6K	.500(12.70)	.564(14.32)	36	FFH12726-S36S1XX4K6K	1.750(44.45)	1.814(46.07)
12	FFH12726-S12S1XX4K6K	.550(13.97)	.614(15.59)	37	FFH12726-S37S1XX4K6K	1.800(45.72)	1.864(47.34)
13	FFH12726-S13S1XX4K6K	.600(15.24)	.664(16.86)	38	FFH12726-S38S1XX4K6K	1.850(46.99)	1.914(48.61)
14	FFH12726-S14S1XX4K6K	.650(16.51)	.714(18.13)	39	FFH12726-S39S1XX4K6K	1.900(48.26)	1.964(49.88)
15	FFH12726-S15S1XX4K6K	.700(17.78)	.764(19.40)	40	FFH12726-S40S1XX4K6K	1.950(49.53)	2.014(51.15)
16	FFH12726-S16S1XX4K6K	.750(19.05)	.814(20.67)	41	FFH12726-S41S1XX4K6K	2.000(50.80)	2.064(52.42)
17	FFH12726-S17S1XX4K6K	.800(20.32)	.864(21.94)	42	FFH12726-S42S1XX4K6K	2.050(52.07)	2.114(53.69)
18	FFH12726-S18S1XX4K6K	.850(21.59)	.914(23.21)	43	FFH12726-S43S1XX4K6K	2.100(53.34)	2.164(54.96)
19	FFH12726-S19S1XX4K6K	.900(22.86)	.964(24.48)	44	FFH12726-S44S1XX4K6K	2.150(54.61)	2.214(56.23)
20	FFH12726-S20S1XX4K6K	.950(24.13)	1.014(25.75)	45	FFH12726-S45S1XX4K6K	2.200(55.88)	2.264(57.50)
21	FFH12726-S21S1XX4K6K	1.000(25.40)	1.064(27.02)	46	FFH12726-S46S1XX4K6K	2.250(57.15)	2.314(58.77)
22	FFH12726-S22S1XX4K6K	1.050(26.67)	1.114(28.29)	47	FFH12726-S47S1XX4K6K	2.300(58.42)	2.364(60.04)
23	FFH12726-S23S1XX4K6K	1.100(27.94)	1.164(29.56)	48	FFH12726-S48S1XX4K6K	2.350(59.69)	2.414(61.31)
24	FFH12726-S24S1XX4K6K	1.150(29.21)	1.214(30.83)	49	FFH12726-S49S1XX4K6K	2.400(60.96)	2.464(62.58)
25	FFH12726-S25S1XX4K6K	1.200(30.48)	1.264(32.10)	50	FFH12726-S50S1XX4K6K	2.450(62.23)	2.514(63.85)
26	FFH12726-S26S1XX4K6K	1.250(31.75)	1.314(33.37)				

 THIRD ANGLE PROJECTION	GENERAL TOLERANCES (UNLESS SPECIFIED)		APPROVE BY FRANK	DATE 20/SEP/16	PART NO. FFH12726-SXXS1XX4K6K	ITEM NO. FFH12726	 Building Technology Cornerstone		
	X.±.012(0.30)	X.±5'	CHECKED BY CHERRY	DATE 20/SEP/16	TITLE Board to Board (Female Header) Pitch 1.27mm 180° Vertical (DIP)			REV 1	SHEET NO. 2/2
	X.XX±.008(0.20)	.X'±2'	DRAWN BY KATE	DATE 20/SEP/16	THIS DRAWING CONTAINS INFORMATION THAT IS PROPRIETARY TO TXGA INDUSTRIAL ELECTRONICS(S.Z)CO.,LTD AND SHOULD NOT BE USED WITHOUT WRITTEN PERMISSION				
	X.XX±.006(0.15)	.XX'±1'							
SCALE 5:1	SIZE A4	X.XXX±.004(0.10)	.XXX'±0.5'						